

## Community Meeting – Plymouth at Ballard

March 29, 2021

### Ballard Crossing

6400 15th Avenue Northwest

Seattle, WA 98107

# Plymouth Housing



*Wendy Tyau-Dumlao, left, a housing case manager for Plymouth Housing, with Leo, a Plymouth Housing resident who has achieved stability after homelessness.*

*(Photo Credit: Rolan Wong)*

---

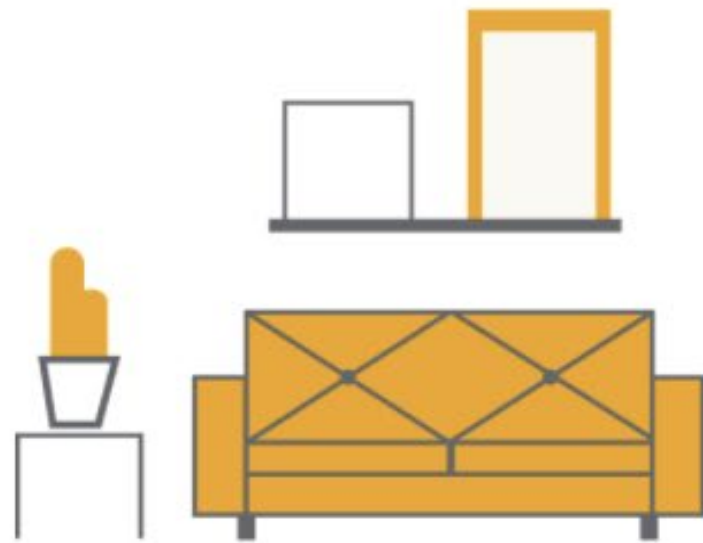
# Our Mission

Plymouth Housing Group works to eliminate homelessness and address its causes by preserving, developing and operating safe, quality, supportive housing and by providing homeless adults with opportunities to stabilize and improve their lives.



# Our Model: Housing First

## Housing before anything else.



### We Believe

That everybody is ready for housing, and we make moving into our apartments as easy as possible for our most vulnerable neighbors.



### We Empower

Our residents by offering them the choice to engage in services and we're here when they need us.



### We Provide

Opportunities for growth that start with each resident's individual needs.

**What is the need for housing and homelessness services in Ballard?**

# Chronic Homelessness

- Chronic homelessness is defined as long-term homelessness where the individual also has a disabling health condition.
- Drives most of the public cost of homelessness
- Individuals face additional challenges accessing services and maintaining housing
- 3,355 people experience chronic homelessness in King County
  - 29% of all people experiencing homelessness in King County



"The psychiatrist says those who have a good support system do better at staying out of the hospital than those who don't, and I've been out of the hospital over five years now. I'm proud of that."

- Latricia, Plymouth Resident

**29% of all  
people who are  
experiencing  
homelessness  
experience  
chronic  
homelessness  
in King  
County**

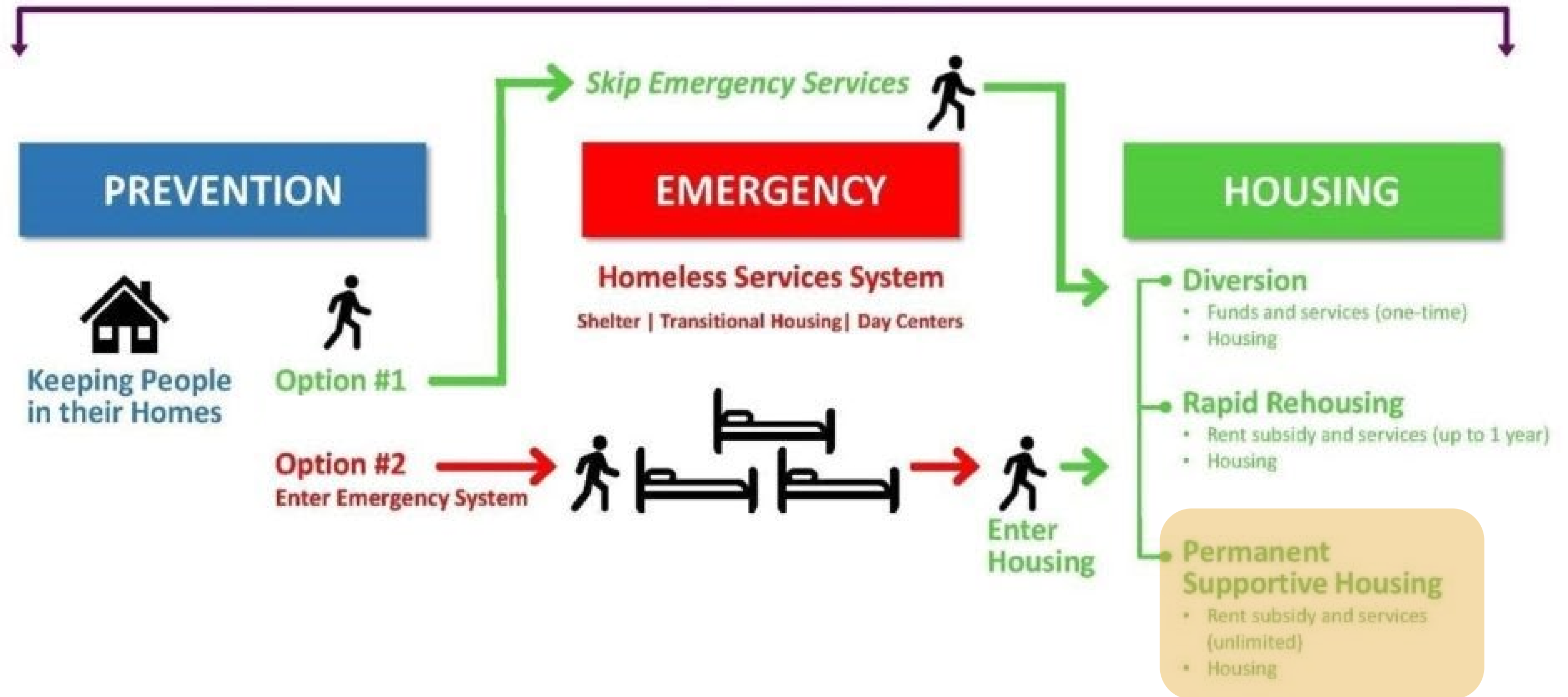


Plymouth will specifically reach those who are experiencing chronic homelessness.

Our current residents live with long-term disabilities and complex behavioral health and medical conditions. They are also in recovery from the trauma of living without a stable home for 2, 5, 10, or even 20 years.

# Addressing Homelessness Requires a Continuum of Care System

## Outreach and Case Management



**What and where is the Ballard  
Supportive Housing Project?**



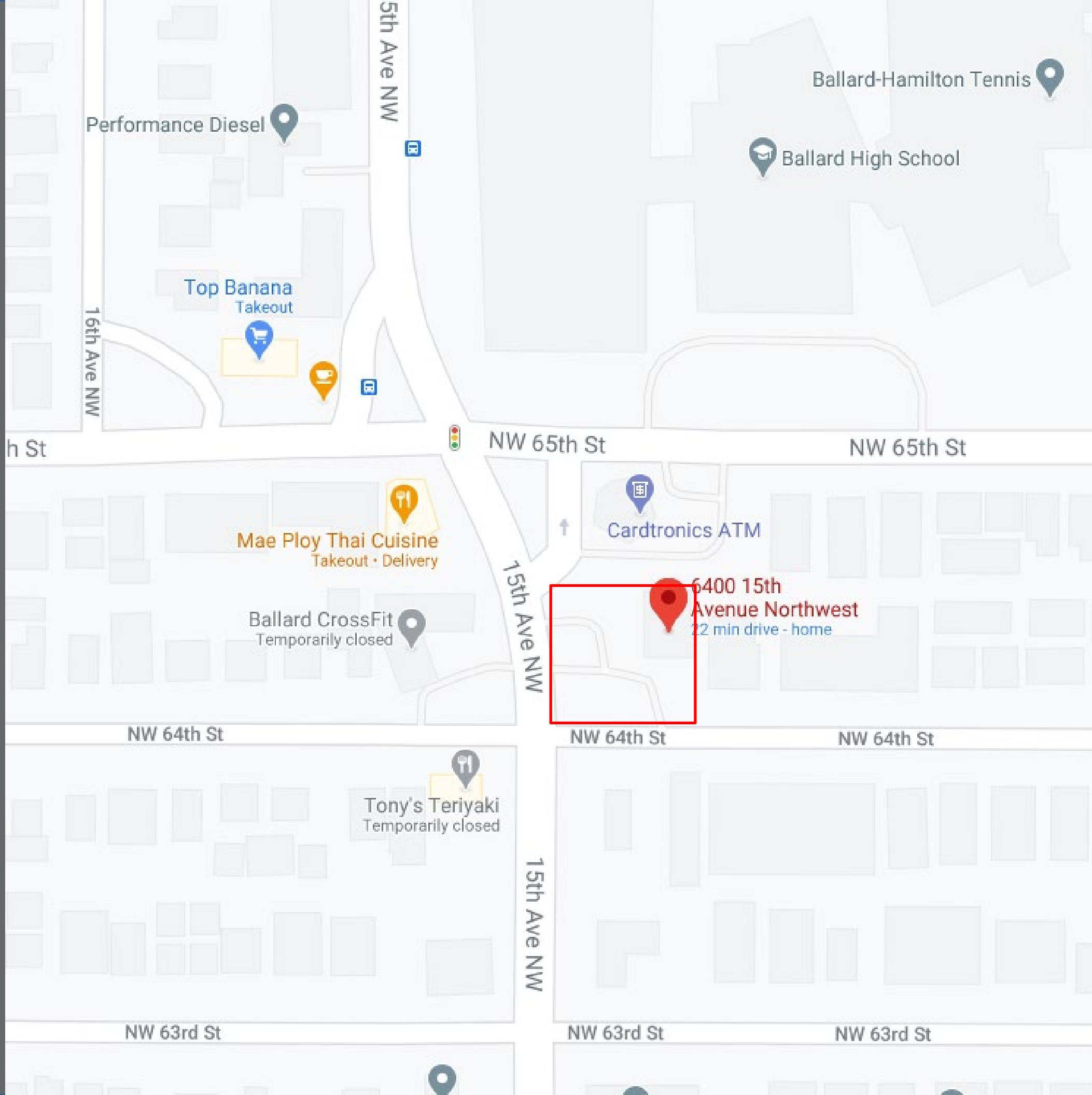


# Ballard Crossing

PERMANENT  
SUPPORTIVE  
HOUSING

CONSTRUCTION:  
SPRING 2021 - MID-2022

- Located at the northwest corner of 15th Ave NW and NW 64th St
- 79 studio apartments for single adults who have experienced chronic homelessness, plus two live-in staff apartments
- Ground-floor commercial retail space along 15th Avenue NW



Performance Diesel

Ballard-Hamilton Tennis

Ballard High School

Top Banana  
Takeout

NW 65th St

NW 65th St

Mae Ploy Thai Cuisine  
Takeout · Delivery

Cardtronics ATM

Ballard CrossFit  
Temporarily closed

6400 15th  
Avenue Northwest  
22 min drive - home

NW 64th St

NW 64th St

NW 64th St

Tony's Teriyaki  
Temporarily closed

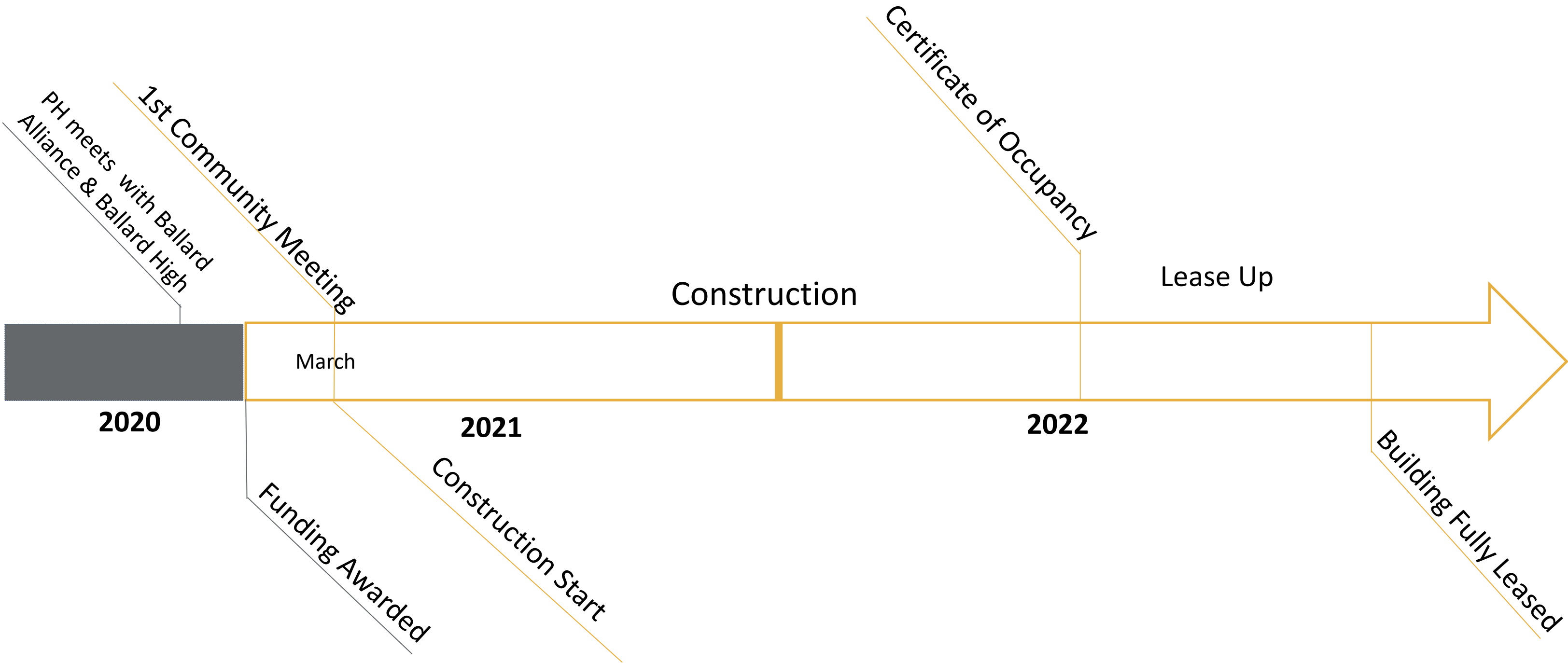
15th Ave NW

NW 63rd St

NW 63rd St

NW 63rd St

# Ballard Supportive Housing– Anticipated Timeline



**What does Plymouth Housing do?**

# Who do we serve: A snapshot

We serve single adults with acute needs  
Of the roughly 1,100 people we serve:

- 96% were disabled
- 58% had mental health conditions
- 47% were people of color
- 14% were veterans
- 59% were older than 55



# Housing + Support =Permanent Supportive Housing

Our model of permanent housing, coupled with wraparound supportive services, gives our residents the solid base they need to rebuild their lives and leave homelessness behind forever.

- By “**permanent**,” we mean that there is no time limit on our housing.
- By “**supportive**,” we mean that we connect our residents with services that can help them thrive.

97%

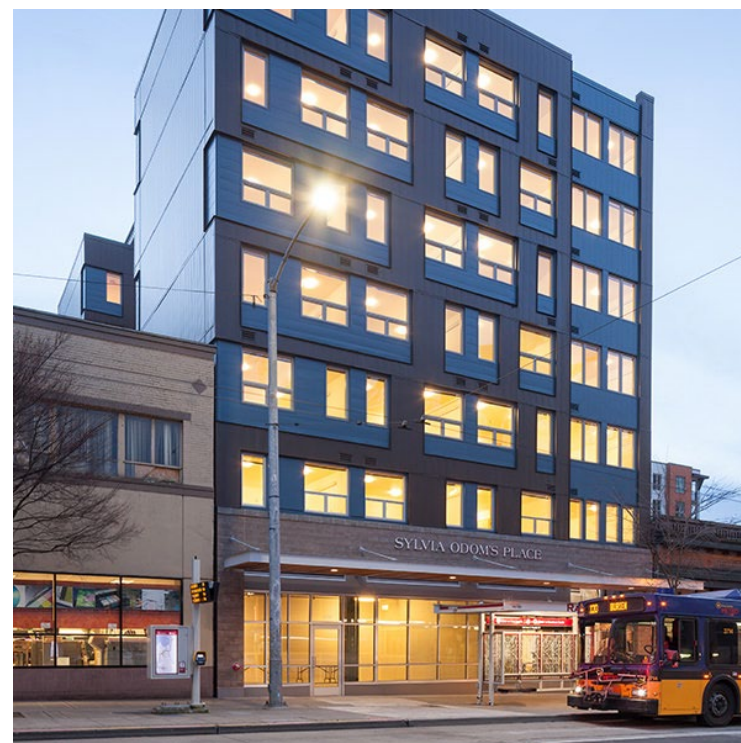
of Plymouth’s  
residents  
succeed in  
maintaining a  
permanent home  
after leaving  
homelessness.

# Housing

- Plymouth owns and operates 15 apartment buildings
- Majority are studios
- Community spaces like TV rooms, courtyards, computer rooms, and community kitchens



Plymouth Place, 2003



Silvia Odom's Place, 2016



Bob and Marcia Almquist Place, 2020



*Anina, Neighborcare PCP, with Sabrina, Plymouth resident, at the Langdon & Anne Simons Senior Apartments.*

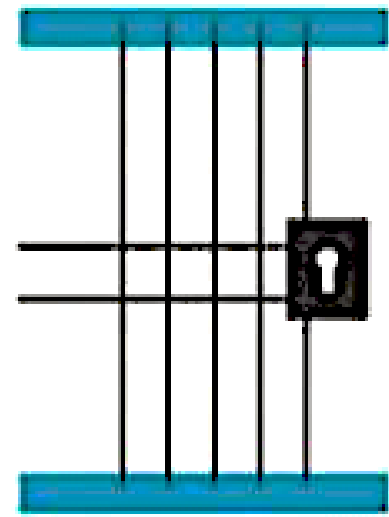
# Social Support

- We build trusting relationships & sense of community
- Permanent housing means life-long care
- Intensive support from Housing Case Managers
- On-site 24-hour staffing
- On-site nursing and medical care



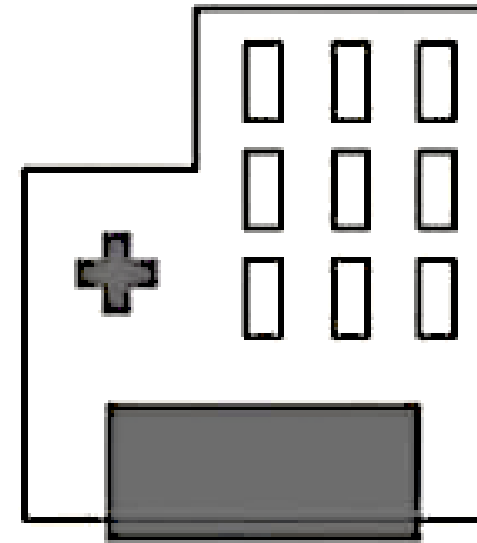
# Compassionate & Cost-Effective

FOR THE COST OF...



**3 MONTHS**

IN A KING COUNTY JAIL



**3 DAYS**

IN THE HOSPITAL

...PLYMOUTH PROVIDES **365 DAYS** OF HOUSING AND CRITICAL SUPPORT SERVICES.



**What is Plymouth like as a neighbor?**

# Our Development and Operating Principles

## SAFETY

- Our buildings are staffed 24/7 to provide support for our residents and an affirmative presence for the neighborhood.
- We create a welcoming environment by keeping public areas monitored, clean, and well-lit.

## DESIGN

- We use design to enhance neighborhood identity.
- We get guidance from the community by developing relationships, holding public meetings, and actively soliciting feedback so we can add beneficial features to our buildings.

## COMMUNITY

- We're committed to supporting the neighborhoods around our buildings.
- We get to know our neighbors and contribute to community groups, both during development and once our residents and staff move-in.

# Resident Expectations

- Our residents have rights and responsibilities
- All residents sign leases and follow building rules
- In turn, Plymouth Housing follows Landlord-Tenant Laws and recognizes resident's rights to privacy



*Access to an apartment has given John Evans (left) a routine and an opportunity to make friends, like Plymouth Housing staffer Chan.  
(Photo Credit: Rolan Wong)*

# Long-Term Owner and Neighbor



*View of the front desk of Plymouth on First Hill*

- Front desk security adds "eyes on the street"
- Owner and operator for 50+ years for each of our buildings
- Dues paying member to neighboring community groups before and after we have developed the building

**How does Plymouth participate in the community?**

# Plymouth Buildings are Neighbors\* to:

## Schools, Daycare Centers, and Universities

- YMCA
- Bright Horizons at Seneca Street
- The Downtown School at Lakeside
- Summit Public Schools: Sierra
- O'Dea High School
- Seattle University
- The Seattle School of Theology & Psychology

## Tourist Destinations & Major Businesses

- Olympic Sculpture Park
- Seattle Center
- The Westin Seattle
- Columbia Center Tower
- Seattle Art Museum
- REI
- Amazon – Blue Shift
- Seattle Athletic Club



*Right: Comcast Employees and their families volunteer at Plymouth Place Apartments for "Comcast Cares Day"*

\*Within 0.5 mile radius of a Plymouth Building

# Ballard Community Engagement

- Ballard District Council
- Ballard Alliance
- Ballard High School
- St Luke's Episcopal Church
- Seattle Police Dept, North Precinct
- Ballard Food Bank
- Councilmember Strauss
- Swedish Medical Center
- Ballard Community Taskforce on Homelessness and Hunger
- Seattle Public Library, Ballard Branch



If your organization is interested in partnering with Plymouth or learning more, please contact us!



# How to get involved

## Volunteer

- Meal service (future opportunities)
- Holiday helpers
- Special events

## Support Residents

- Welcome Home baskets and food bags
- Supply drives

## Host a Learning Event

## Donate

For volunteer or other engagement inquiries, please email [Cmartin@plymouthhousing.org](mailto:Cmartin@plymouthhousing.org)



*One of Plymouth's volunteers brings care packages to residents*

**We will continue to listen, to stay connected, and to expand engagement.**

**Thank you for your time!**

**Contact**

**[tparham@plymouthhousing.org](mailto:tparham@plymouthhousing.org)**

**[emurphy@plymouthhousing.org](mailto:emurphy@plymouthhousing.org)**